

ZILKHA RADIOLOGY'S introduction to **Breast MRI**

Written by Alain Zilkha, M.D. D.A.B.R. & Albert Zilkha, M.D., D.A.B.R.

Zilkha Radiology is the first and only radiology group on Long Island to perform MRI of the breast on the 3T open bore MRI. We are also the first on Long Island to perform MRI guided breast biopsies on this powerful open bore scanner.

The image quality on the 3T MRI is unrivaled. Images performed on our 3T MRI are acquired very quickly. Our 3T MRIs have "open bore" technology which means that the opening of the MRI (where the patient rests during the MRI) is larger than the traditional "closed bore" MRIs. This translates into increased patient comfort. On the 3T MRI, a complete study is performed in 20 minutes. Studies on the weaker MRIs take much longer. If you need an MRI of the breast, the 3T MRI is the way to go. It is stronger, faster, and produces superior images.

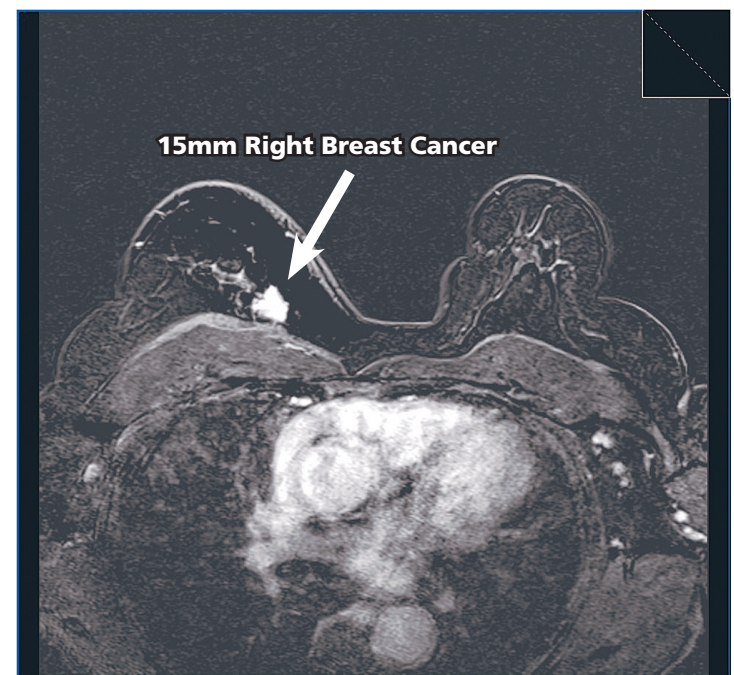
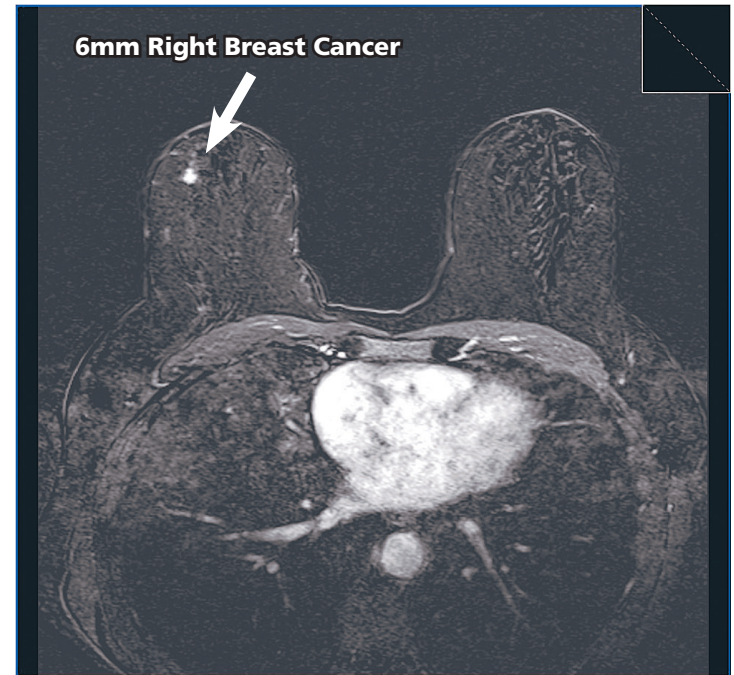
There has been much discussion in the media lately about the role of MRI in breast cancer. MRI of the breast provides vital information to your doctor that other exams such as mammography and ultrasound cannot provide.

There are different reasons why your doctor may want you to have a breast MRI. Some patients may have more than one tumor in the breast. In this situation, MRI is utilized to evaluate the multiple tumor locations. This is important for patients considering breast conservation surgery. Breast MRI can further evaluate abnormalities detected by mammography and/or ultrasound. MRI has a valuable role in patients with dense breast tissue. MRI is helpful in distinguishing scar tissue from recurrent tumors. MRI can determine if a newly discovered tumor has spread within the breast or to the chest wall. Breast MRI can evaluate tumor changes after chemotherapy. Lastly, breast MRI can evaluate the integrity of breast implants.

Dr. Albert Zilkha served as professor of clinical radiology at the State University of New York at Stony Brook School of Medicine. The offices of Zilkha Radiology are very easy to get to, conveniently located next to major parkways.

The West Islip office is located right off of the Robert Moses causeway just across the street from Good Samaritan Hospital. The East Islip office is located just off the Heckscher Parkway adjacent to the East Islip Library. There is plenty of parking in both offices. The offices are open Monday through Friday from 7 AM to 8 PM and on Saturday from 8 AM to 3 PM.

WWW.ZILKHARADIOLOGY.COM



369 East Main Street, Suite 18, East Islip, NY 11730
(631) 277-1600 • FAX (631) 277-1638

1161 Montauk Highway, West Islip, NY 11795
(631) 669-1717 • FAX (631) 669-2227