

# Ultrasound guided breast biopsy at Zilkha Radiology

Written by Alain Zilkha, M.D., D.A.B.R.

**Z**ilkha Radiology provides a very caring, nurturing, professional environment for those patients who need a breast biopsy. If your doctor says you have a breast lump and you need a biopsy, this can be very frightening. We do everything we can to get you in that day or at a time that is good for you. We promise to make your experience as pleasant as possible. Biopsies are done in our East and West Islip offices using very advanced ultrasound scanners.

Breast lumps or other abnormalities can be detected by the patient herself (self breast exam), your doctor during a patient visit, mammogram, ultrasound (sonogram) or other imaging modalities. A benign mass and a cancer can sometimes look similar to each other. For this reason, a biopsy is performed to see exactly what this abnormality is. If the lesion is best seen on ultrasound, your biopsy will be performed with ultrasound guidance.

A typical ultrasound guided breast biopsy at Zilkha Radiology unfolds like this. Upon arrival at our office, you will be warmly greeted at the patient window. Paperwork is filled out and you will be escorted to the ultrasound suite by our nurse or technician. The biopsy procedure is explained including the risks and benefits. Pre-biopsy images of the

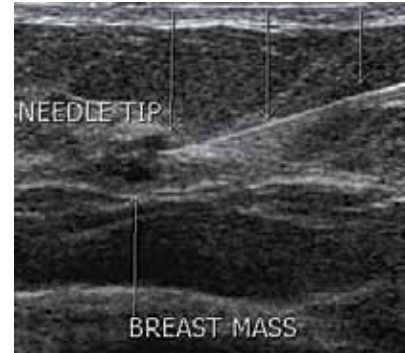
lump are obtained. The doctor joins you in the ultrasound suite for a pre-biopsy chat. Any additional questions are answered to put you at ease. We will do everything in our power to make you as comfortable as possible.

We are now ready for the biopsy. The skin over the lump is cleaned with betadine. The skin and underlying tissues near the lump are numbed with lidocaine using a very skinny needle. Under ultrasound guidance, we watch as a second very skinny needle enters the lump to remove a few cells. We then take a slightly larger sample with a core biopsy needle. A tiny metallic marker is then placed in or near the lump. This makes the biopsy site easy to see on future mammograms. The biopsy site is compressed with an ice pack. A low compression mammogram is taken to confirm the placement of the tiny marker. The tissue sample is sent to pathology. You are given post biopsy care instructions and see the doctor before you go home.

*The offices of Zilkha Radiology are conveniently located next to major parkways. The offices are open from 7 a.m. to 8 p.m. Monday through Friday. On Saturday, the office hours are from 7 a.m. to 3 p.m. Call 631-277-1600 or visit [zilkharadiology.com](http://zilkharadiology.com)*



*The breast lump*



*The needle entering the breast lump under ultrasound guidance. The straight bright line is the needle entering the lump.*